

SECTION 8, T.6N., R.2E., S.L.B. & M.
IN WEBER COUNTY
SCALE 1" = 400'

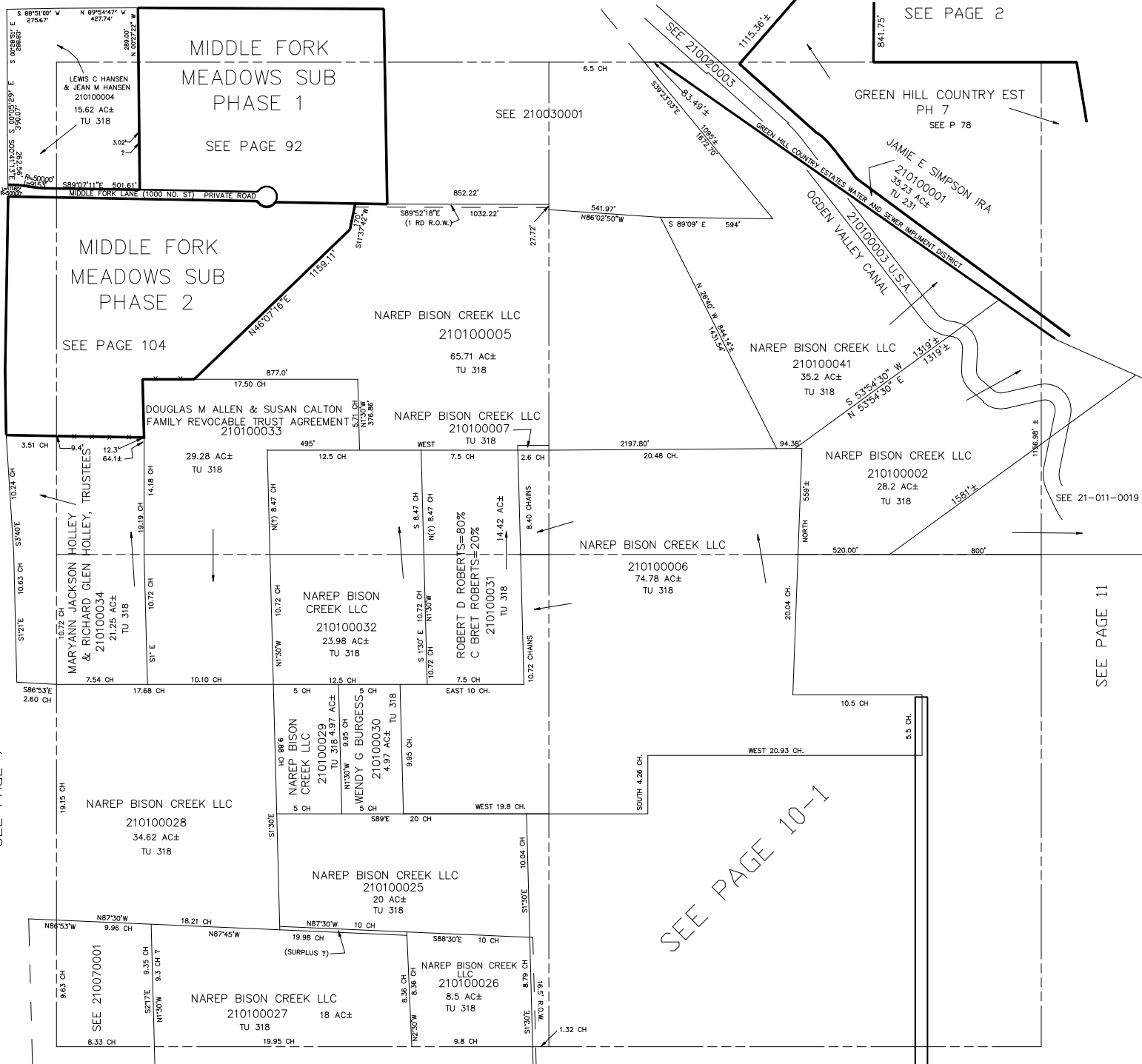
TAXING UNIT: 231, 318

SEE PAGE 3

SEE PAGE 6

SEE PAGE 7

21



SEE PAGE 2

GREEN HILL COUNTRY EST
PH 7
SEE P 78

JAMIE E SIMPSON IRA
210100001
35.23 AC±
TU 231

OGDEN VALLEY CANAL
210100003 U.S.A.
GREEN HILL COUNTRY ESTATES WATER AND SEWER IMPROVEMENT DISTRICT

NAREP BISON CREEK LLC
210100005
65.71 AC±
TU 318

NAREP BISON CREEK LLC
210100041
35.2 AC±
TU 318

DOUGLAS M ALLEN & SUSAN CALTON
FAMILY REVOCABLE TRUST AGREEMENT
210100033

NAREP BISON CREEK LLC
210100007
TU 318

NAREP BISON CREEK LLC
210100002
28.2 AC±
TU 318

NAREP BISON CREEK LLC
210100006
74.78 AC±
TU 318

NAREP BISON CREEK LLC
210100032
23.98 AC±
TU 318

ROBERT D ROBERTS=80%
C BRET ROBERTS=20%
210100031
TU 318

NAREP BISON CREEK LLC
210100029
TU 318 4.97 AC±
TU 318

WENDY G BURGESS
210100030
4.97 AC±
TU 318

NAREP BISON CREEK LLC
210100028
34.62 AC±
TU 318

NAREP BISON CREEK LLC
210100025
20 AC±
TU 318

SEE 210070001
8.33 CH

NAREP BISON CREEK LLC
210100027
18 AC±
TU 318

NAREP BISON CREEK LLC
210100026
8.5 AC±
TU 318

SEE PAGE 26-2

SEE PAGE 26

SEE PAGE 11